



# SHARADA

## SERENITY

COMMERCIAL CUM RESIDENTIAL COMPLEX

NH 66, Near Shree Veerabhadra Temple  
Opp. Hotel Suraj International, Surathkal

*y* our HOME  
our STYLE  
our WAY



# SHARADA

## SERENITY

We create customised homes that enhance the quality of life for people who live in them. Harmony with nature, the highest aesthetic standards, use of the latest construction techniques & processes and complete transparency are hallmarks of the Total Environmental experience.

---

### SPECIFICATIONS

- • Double coat exterior plastering with waterproof treatment
- • Smooth interior wall plastering with putty finish
- • Interlock paving for parking and open areas
- • Final slab covered with sheet truss roof
- • Hard wood internal doorframes
- • Teakwood frame for main door
- • Fibrotech door for toilets
- • 2'0" x 2'0" vitrified flooring of premium quality
- • Good quality glazed tiles for toilets wall
- • Anti skid ceramic tiles for toilet flooring
- • Overhead water tank and underground sump tank with required pumps.
- • TV and Telephone point in living room
- • Electrical point as per specifications

### HIGHLIGHTS

- • Planned as per Vaastu
- • Reticulated gas connection
- • CCTV Facility
- • Intercom Facility
- • Generator backup with sound proof enclosure
- • Automatic passenger lift
- • 3 KVA power for all apartments
- • 24 hours security facility
- • Society Office
- • Water supply with open well in addition to the city corporation water connection

### ELECTRICAL

- • Finolex/RR/Equivalent cables
- • Modular switches

### BATHROOM

- • Waterproof treatment for sunken slabs
- • Alluminium ventilators with exhaust fan provision
- • Health faucet and shower in all the bath rooms
- • Jaguar / Hindware / Equivalent bathroom and sanitary fittings
- • Hot water Geyser provision

### KITCHEN & WORK AREA

- • Granite platform with bullnosing
- • Stainless steel sink
- • Adequate power point and exhaust fan provision
- • Provision for fixing water purifier near the sink
- • Provision for washing machine in work area

### BEDROOM

- • Split A.C. provision for all bedrooms
- • T. V. Points in master bedrooms

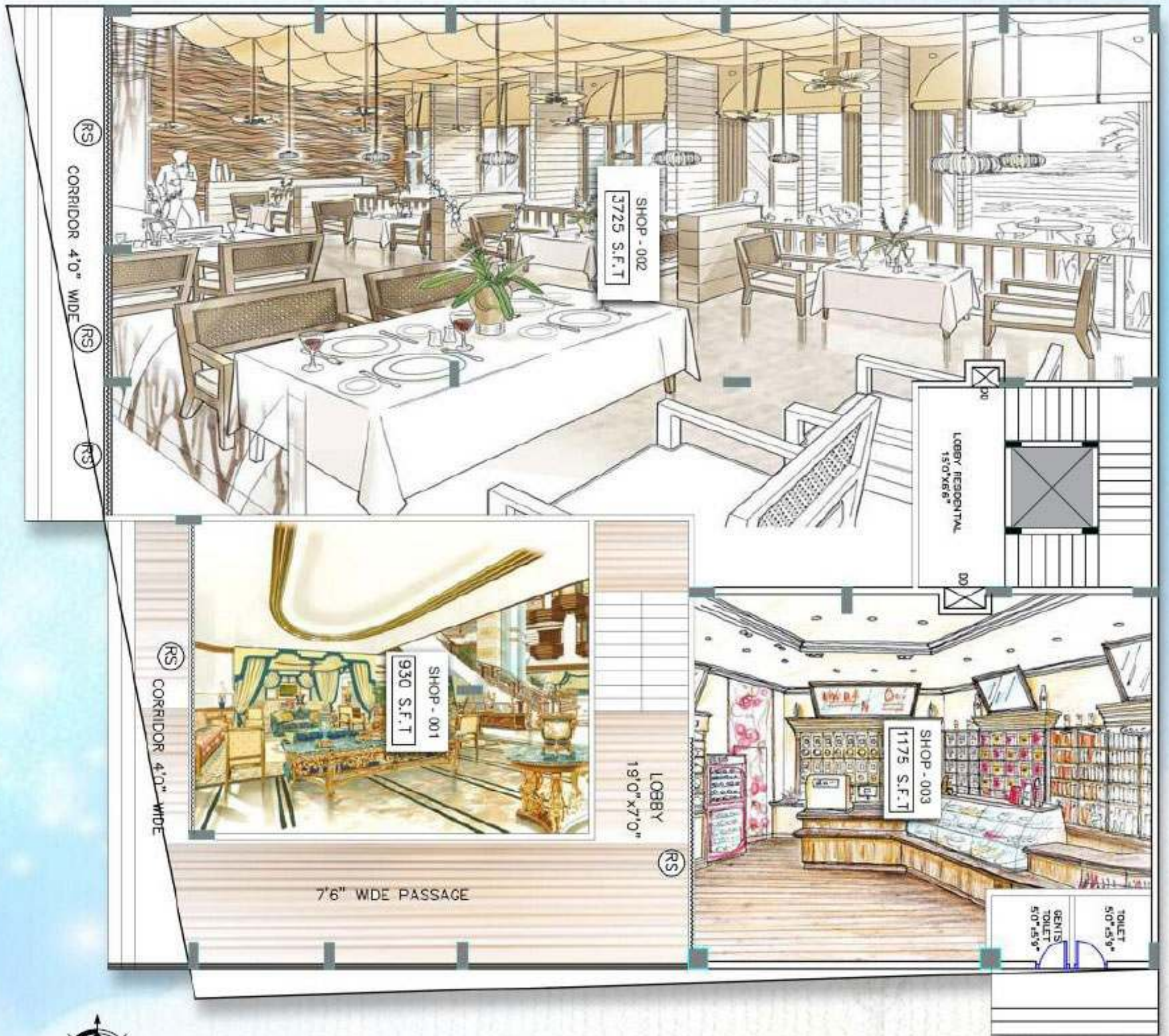
### TOILET FITTINGS AND ACCESSORIES

- • White coloured sanitaryware of Hindware or equivalent make in all toilets
- • Wallmount western commode for toilets
- • Hot and Cold Mixer unit in each Bathroom
- • Flooring with Ceramic Tiles and waterproofing
- • Pressure checked Plumbing
- • Quality C.P. Fittings/Fixture

### BALCONY

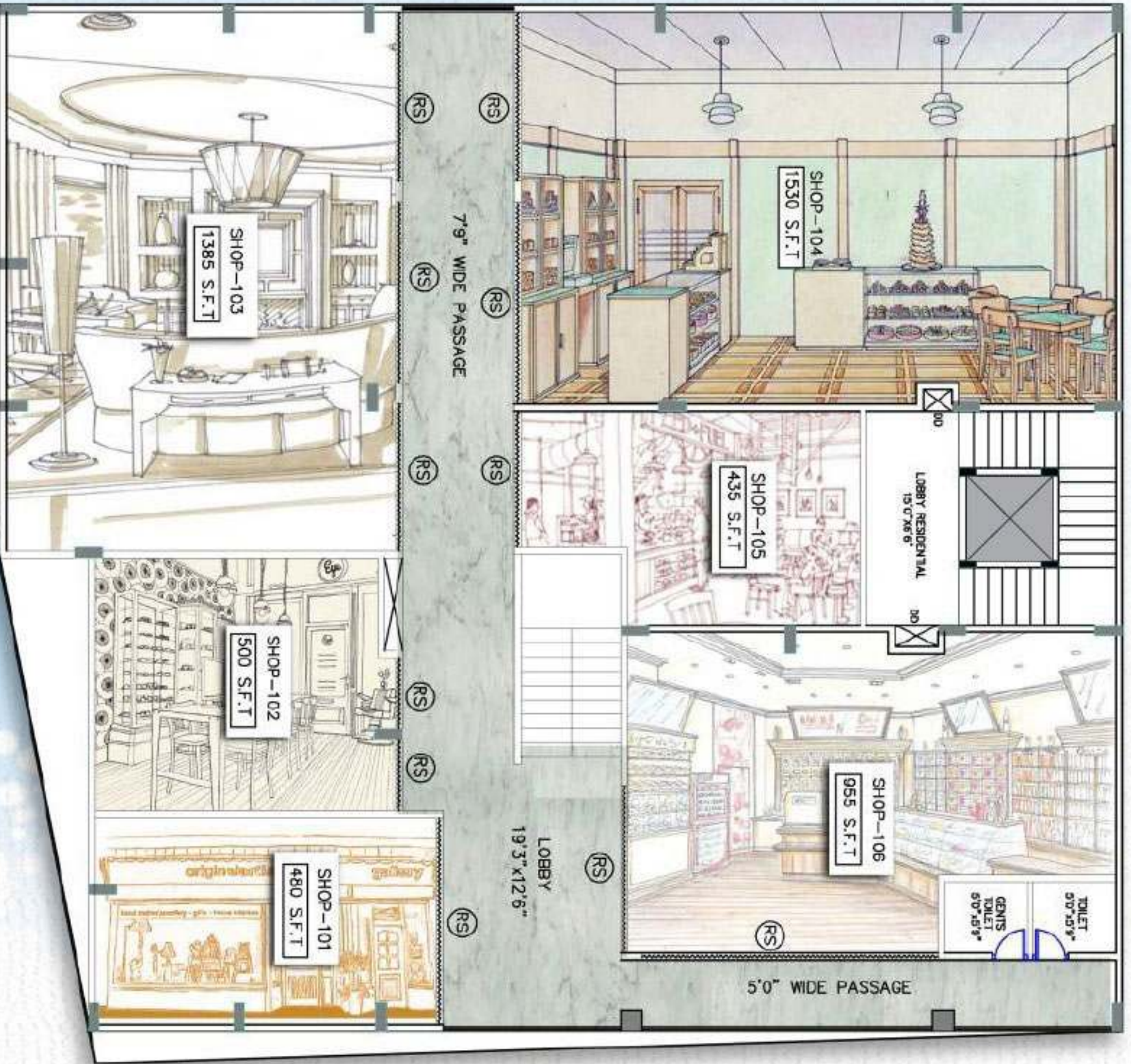
- • Antiskid Ceramic flooring with railing



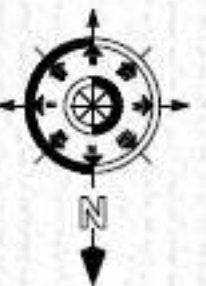


**GROUND FLOOR**

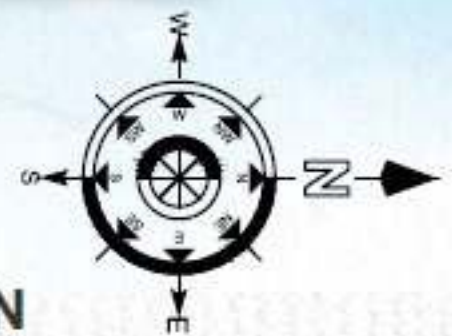




FIRST FLOOR

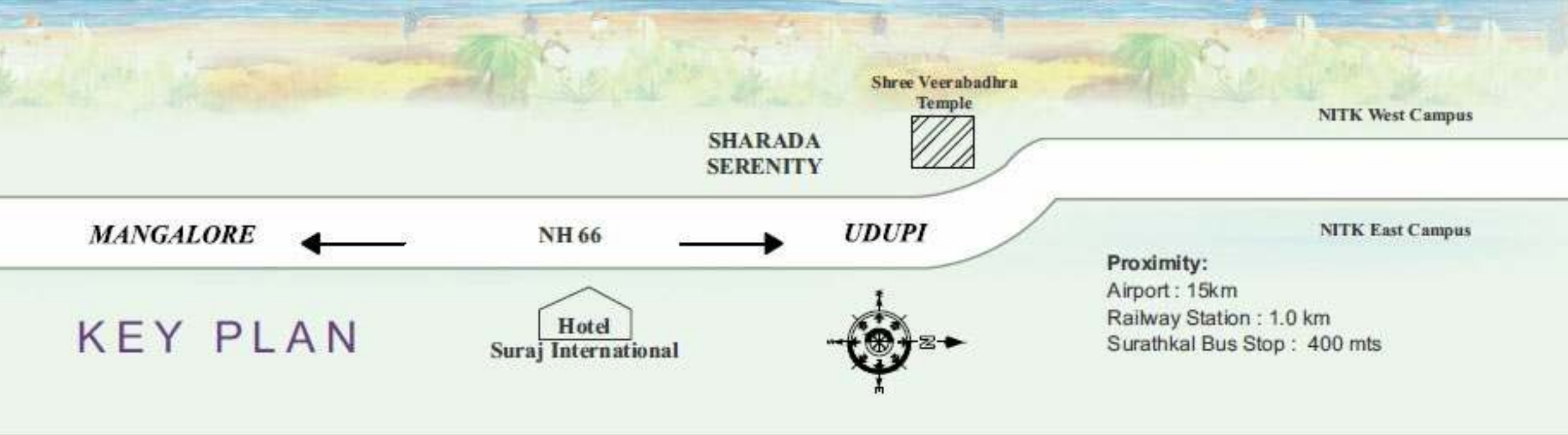






**TYPICAL PLAN**  
SECOND & THIRD FLOOR





# KEY PLAN

**Proximity:**  
 Airport : 15km  
 Railway Station : 1.0 km  
 Surathkal Bus Stop : 400 mts

## ONGOING PROJECTS



Shantha Sharada Residency, Manipal



Ambaraj Ville, Karnad, Mulky



**PROJECT BY**  
**SHARADA INFRADESIGN (INDIA) PVT. LTD.**  
 An ISO 9001-2008 Certified Company  
 Corporate Office : Punja Building, Karnad, Mulky 574154(D.K)  
 Ph: (O) 0824-2293277, 9900141477  
 Email: sharada.mulky@gmail.com

**PROJECT MANAGEMENT CONSULTANT**  
**Jeevan K. Shetty**  
 BE, CIVIL, M.TECH(CT), M.B.S, M.I.S.T.E, A.I.Y, A.M.I.E  
**SHARADA ASSOCIATES**  
 Karnad, Mulky

**CONTRACTORS**  
**PAVAKI VENTURES**  
 Karnad, Mulky  
 pavakimulky@gmail.com

**PROJECT APPROVED BY ALL MAJOR BANKS**

**for Booking please contact**  
 Ph : 0824 - 2294077 / Call : +91 9008803718  
 email : sharadaserenity@gmail.com www.sharadamulky.com



The brochure is conceptual in nature and is by no means a legal offering.  
 The promoters have the right to change, alter, delete or add any specification / amenity / facility mentioned herein